



Week Ending Friday 6 March 2020

Coronavirus (COVID-19)

As you know from the Headteacher's correspondence to you last week and the message in the Blog, we are alert to the ever-evolving situation regarding the Coronavirus.

The advice from Public Health England, the Department for Education and the NHS remains largely the same as last week and they continue to remind us about the importance of good hygiene and, in particular, how washing our hands for 20 seconds is central to prevent and slow the spread of the coronavirus. A link to the gov.uk website reiterating this advice, can be found below:

<https://www.gov.uk/government/news/public-information-campaign-focuses-on-handwashing>

As of today, the guidance on the Public Health England is as below:

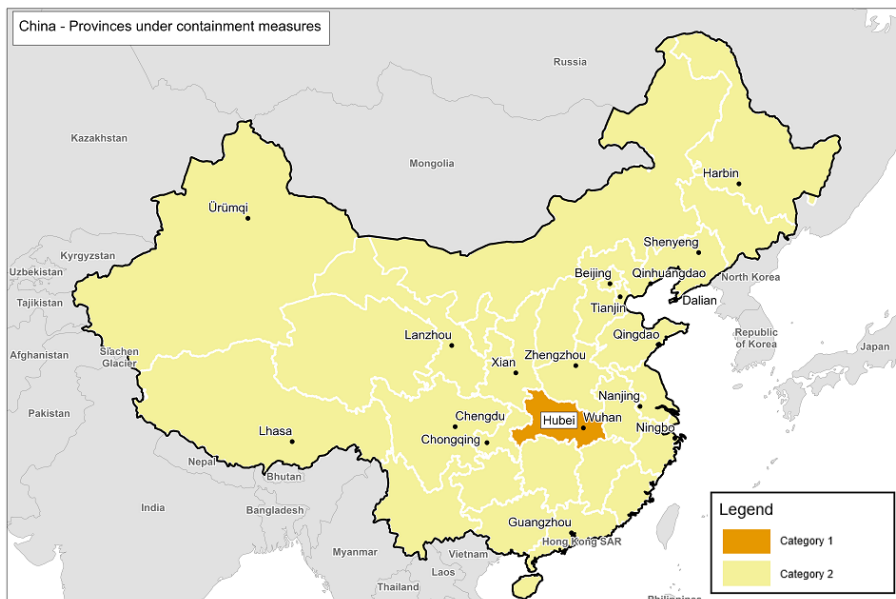
Category 1: Travellers should self-isolate, even if asymptomatic, and use the [111 online coronavirus service](#) to find out what to do next. Go home or to your destination and then self-isolate.

Category 2: Travellers do not need to undertake any special measures, but if they develop symptoms they should self-isolate and call NHS 111.

The guidance for Italy, Iran, Daegu or Cheongdo (Republic of Korea), Laos, Myanmar, Cambodia and Vietnam applies to individuals who returned from these specific areas on or after 19 February 2020.

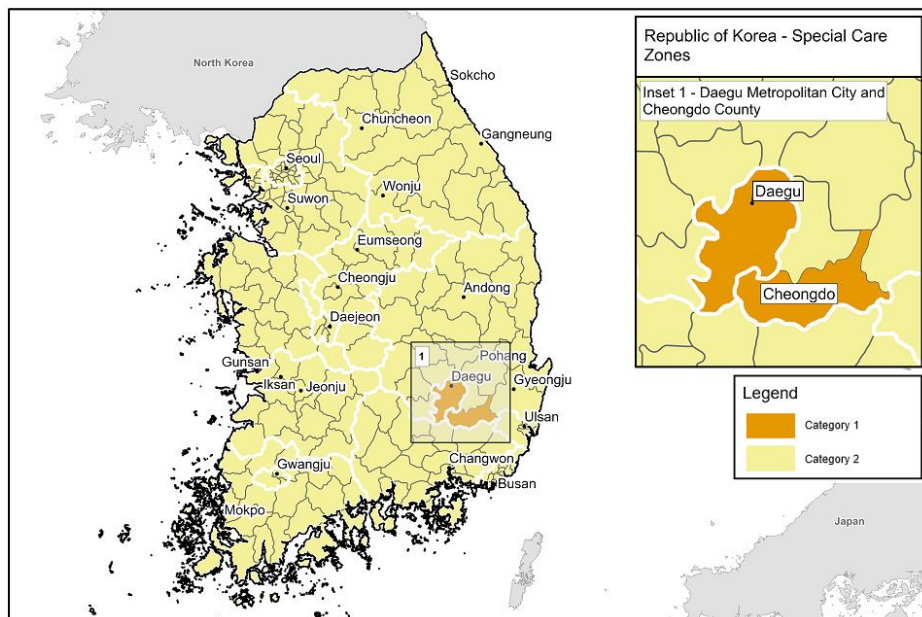
Category 1 countries/areas: Wuhan City and Hubei Province (China, see map); Iran; Daegu or Cheongbo (Republic of Korea, see map); Any Italian town under containment measures (see map).

Category 2 countries/areas: Cambodia, China*, Hong Kong, Italy (see map), Japan, Laos, Macau, Malaysia, Myanmar, Republic of Korea*, Singapore, Taiwan, Thailand, Vietnam.

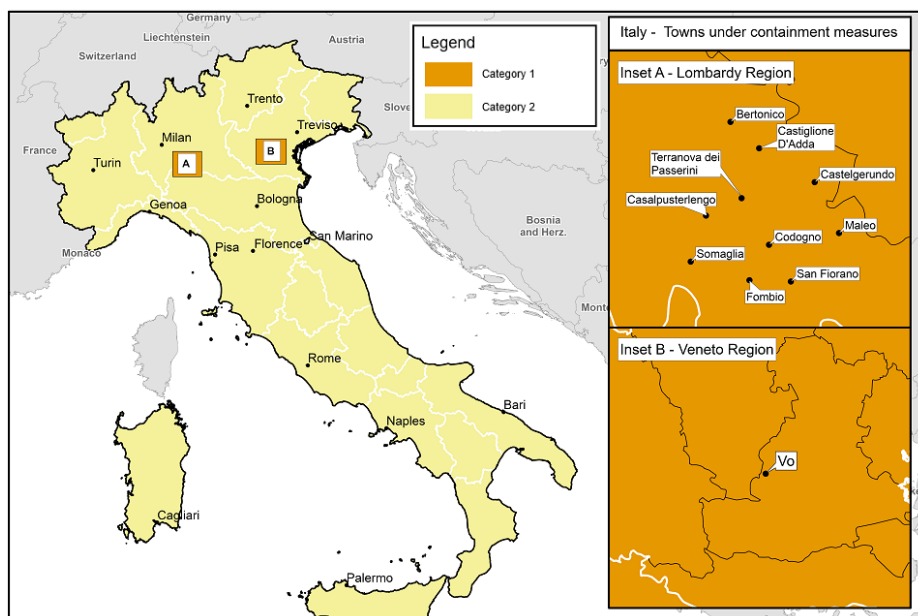


**Except areas of the country specifically referred to in Category 1.*

Map of specified areas in China



Map of specified areas in Republic of Korea



**Except areas of the country specifically referred to in Category 1.*

Map of specified areas in Italy

We have had a small handful of students who have self-isolated, not because they were in any of the areas affected, but because they were showing some symptoms similar to those of Coronavirus. We have so far had no students (or staff) test positive.

The current advice remains in place that no school should close in response to a suspected (or confirmed) COVID-19 case unless advised to do so by Public Health England.

We will continue to monitor the situation and will keep parents and staff updated with any news as and when it becomes available.





Beths Grammar School

Excellence – Community – Respect – Nurture



Summer Fair 2020

After the success of our first ever Christmas Fair, we are delighted to confirm that, this summer, we will be holding a summer fair! Please put Saturday 20 June, from 12 noon until 5.00pm into your diary. We are once again hoping to have a variety of stalls and if you would like more information on having your own table, or know someone who does, please email msgeorge@beths.bexley.sch.uk.

This time we are hoping to have performances from local dance and sports groups and again, if you know anyone who might be interested, please let us know.

These events are great for showcasing local produce, products and companies and we welcome you all!

TICKETS ARE NOW ON SALE!!

BETHS GRAMMAR SCHOOL PRESENTS:

THE WIZARD OF OZ!

**19TH, 20TH & 21ST
MARCH 2020**

**TICKETS
AVAILABLE
FROM THE
BOX OFFICE**



THE WIZARD OF OZ
(RSC VERSION)
By L. Frank Baum
With Music and Lyrics of the MGM motion picture score
By Harold Arlen and E. Y. Harburg
Background Music by Herbert Stothart
Dance & Vocal Arrangement by Peter Howard
Adapted by John Kane from the motion picture screenplay
By arrangement with MusicScope and Stage Musicals Limited of New York



Beths Grammar School



@Bethsgs



Beths Grammar



THE WIZARD OF OZ!

DATE:	THURS 19TH	FRI 20TH	SAT 21ST
SHOW TIME:	7:00PM	7:00PM	1:30PM
PRICES:	ADULT £5	CHILD £3	CONCESSION £3

 **TICKETS AVAILABLE AT RECEPTION
DURING BREAK & LUNCH**

PARENTS ASSOCIATION

Beths Parents Association 

QUIZ NIGHT

When?
16th May 2020

Time
7:30pm

Where?
Beths Grammar School
Main Hall

Remember to bring your friends to form a team to combat against other teachers and parents in a series of fun questions, while also raising money for the school!

Tickets
Tickets are £5.00 an adult and children (U16) go for £2.50 each. Book now and pay on the evening. Maximum 8 people a team.

Bring some snacks and drinks along, to share with those clever friends and family. The PA team will be selling refreshments, as well as raffle tickets on the night, so bring some cash!

To book a table email:
beths.parents.association@gmail.com

Facebook:
Beths Grammar Parents Association

If you have a team of 4 and would like to join someone else let us know and we will help you team up with another group.





Students Arriving on School Site

We would like to continue to remind you that we are struggling to cope with the number of students arriving on site prior to 8.00am in the morning. Below is an extract from a Blog earlier in January, which we would like to remind you about.

Wednesday 22 January – Road and Parking Concerns

As you know, each week in the blog we ask that parents be considerate of our neighbours when dropping or picking up their sons and daughters at the school.

Unfortunately, on Wednesday at 8.15am, our fire alarm went off and as with school procedure, we had to evacuate those in school to our 'muster point'. As is also procedure, students and cars were not allowed to enter the school site until we were advised the site was clear. Due to cars blocking Hartford Road, the Fire Brigade were unable to access the school site. Fortunately, this was a false alarm, however if it hadn't been, the fact that the Fire Brigade were not able to get to the school could have resulted in such dire consequences, as the loss of life.

*The incident on Wednesday, also highlighted that students are arriving on site before 8am, the earliest permitted time of arrival. If there were to be an incident/emergency before the start of the school day, we would have no record of the students on site or their location, and no first aiders to deal with any accident that may occur. Please ensure that your son or daughter arrives at school **no earlier** than 8am.*

We have also been made aware, on several occasions, of cars blocking neighbours drive ways, and on some occasions, being quite abusive to the residents. Please can we remind you that we are constantly trying to work with our neighbours to ensure we have a good relationship; inappropriate and inconsiderate parking only reflects poorly on the school's reputation.

There is also the issue of when students are dismissed at the end of the day, their vision is obstructed by the number of cars parked along Hartford Road and we have, unfortunately had a number of incidents where students have been injured by cars as they have tried to cross the road.

If parents were to refrain from dropping and picking up their sons or daughters by car, it would greatly eliminate the issue experienced by both the school and our neighbours.

Adverse Weather Conditions

As mentioned earlier in the Blog by the Headteacher, this term is the grimest weather-wise and with the possibility of poor weather being predicted over the coming weeks, we thought a reminder to all, as to our procedures, would be helpful.

In the unlikely event that the school is closed due to adverse conditions we will make every effort to make information available to staff, students and parents by 6.30am. However, it may not always be possible to make the decision by this time, so we would ask you all to be understanding about this.





This information will be available on the following websites:

The school's website www.beths.bexley.sch.uk - a 'yellow sticky' will appear on the front page of our site clarifying whether we are open or shut.

The link <http://map.lgfl.org.uk/opencheck/default.aspx?la=303> to Bexley's School OpenCheck website. Parents without internet access can phone 020 8408 7508 and enter the school's DfE number, 3035403, to get the same information.

SPORTS SECTION

Results

FOOTBALL				
02.03.2020	North Kent Semi Final	U13 v Bexleyheath Academy	Home	Won 3-1
	North Kent Semi Final	U14 v Hurstmere	Away	Lost 8-1
04.03.2020	2 nd XI N Kent League	2 nd XI v Townley GS	Home	Won 5-3
RUGBY				
06.03.2020	Friendly	U12B v Stone Lodge	Home	TBA
BASKETBALL				
28.02.2020	Kent	U19 v Northfleet	Away	Lost 47-99
02.03.2020	Jnr NBA Tournament	U12 v Inspiration Academy	Home	Won 24-4
		U12 v Wilmington Academy	Home	w/o
04.03.2020	Basketball England Regional Round One	U14 v St Pauls Catholic College	Home	Won 60-54





Fixtures

FOOTBALL			
11.03.2020	2 nd XI League	2 nd XI v Langley Park	Away
RUGBY			
BASKETBALL			
09.03.2020	Friendly	U17 v Sevenoaks	Away
10.03.2020	Basketball England Regional Round 1	U16 v Woodlands	Home
VOLLEYBALL			

Emailing the School

Should you need to email the school with items/concerns of a more 'sensitive' nature, please email headspa@beths.bexley.sch.uk rather than the generic admin email address.

Up and Coming Events

Monday 9 March	Year 12, University of Leicester
Tuesday 10 March	PA Meeting in Conference Room
Thursday 12 March	Year 9 Parents Evening in the Hall
Saturday 14 March	Saturday Production Full Dress Rehearsal
Thursday 19 March	19.00 School Production of 'The Wizard of Oz'
Friday 20 March	19.00 School Production of 'The Wizard of Oz'
Saturday 21 March	13.30 (Matinee) School Production of 'The Wizard of Oz'
Tuesday 24 March	Year 12 UCAS Convention at Excel
Thursday 26 March	Year 11 Parents Evening in the Hall

