



Beths Grammar School

Excellence - Community - Respect - Nurture

Week Ending Friday 7 February 2020

Chinese New Year Afternoon Tea

On Monday, we held a Chinese New Year-themed afternoon tea for some of the retired and semi-retired members of our local community. As always, it was really lovely to see so many of our 'regulars' and also many new faces.

Guests were treated to a Chinese lion dance performance as well as some Kung Fu and Tai Chi. They even joined in the Tai Chi, as did our boys – both doing an excellent job! They enjoyed an Asian-inspired soup with prawn crackers and wraps with Chinese-style meats and vegetables with cakes and crumble to finish.

Thank you to all who came and we look forward to seeing you at our next event. Keep an eye out for the date and theme.

As mentioned to our guests, our Performing Arts Department are putting on several performances of The Wizard of Oz from 19-21 March. Tickets will be available for purchase soon. Again, please keep an eye out!

Miss Price and your friends at Beths

Please find below a testimony from one of our visitors:

"I would like to congratulate you and the staff and students on the "Community Afternoon Teas" you arrange for the elderly of Bexley. I have been to 4 of these events and have enjoyed each of them thanks to the hard work put in by all involved. I usually bring 3 friends - one of whom walks with a stick - and we enter by a different door to all the other guests. Every time we find the students help us and take us to the hall and to a table. There follows greeting friends old and new and having chats with the students. The food is always good and fits the theme of the event.....the Chinese New year was especially delicious. The entertainment is quite amazing given the participants are all amateurs, singing, dancing and acting.

"We have a lot of very interesting conversations with the students and learn a lot about their life, travels and their education.....they have even taught us some Chinese, how to say hello and goodbye. I think we all enjoy the contact with your students as much as the actual food and entertainment, which is always fun and light-hearted, and that is a credit to both the students themselves and their teachers.

"A hearty thank you to all concerned and long may these wonderful afternoons continue."





Time to Talk Day – 06.02.2020

Wednesday was Time to Talk day, it was amazing! Time to Talk day is a national campaign and a day when we encourage everyone to have a conversation about mental health. That can seem a scary thing to do because we are afraid we will say the wrong thing. Although having a conversation about mental health doesn't have to be terrifying. Just like physical health, we all have mental health, and starting a conversation about this topic is as easy as saying "How are you?"

Wellbeing Champions stood at the school gates and handed out little paper hearts and sweets which had positive messages written on them. I think that the students were glad to have some sweets before school!

The idea of the messages on the paper hearts was to show students that the wellbeing network at Beths Grammar cares about their mental health and lets them know that there is always someone to talk to and someone is always there for them.



Also as Wellbeing Champions we run a club on Wednesday lunchtimes in C4, called Connect Club. It is a place to go when you just want to relax or if you have something to get off your chest, you can talk to us, the Wellbeing Champions (shown by our badges) or you can talk to the Councillors, it's really up to you!

So really every day is time to talk day at Beths Grammar!

By Alex, WellBeing Champion.

Greenwich & Bexley Community Hospice

This week we received a wonderful thank you letter from everyone at Greenwich & Bexley Community Hospice. On the last day of the Autumn term, students very kindly donated money for wearing their Christmas jumpers. Half of the donations, equalling a wonderful £847.00 went to the Hospice where the money will be used well on allowing nurses to spend time with patients, getting to know them and understanding their needs, both medically and personally.





Trip to Parliament

On Thursday 6 February, 24 Year 12 Beths students visited the Houses of Parliament. They were given a tour of the Palace of Westminster, although a lot of the outside and inside was full of scaffolding but got to see both Houses of Parliament in action: a debate in the House of Lords on NHS targets and the issue of still births in the House of Commons. It was interesting to note the differences in both Houses.

After the tour we then took part in a workshop on representation and voting, which is linked to what students have been studying in Politics A level. The workshop leader was really impressed with the participation and knowledge of our students. Mr Chamberlain noted that in over 15 years of bringing students to Parliament, this was probably one of the most engaged groups of students he had brought.

The photos show students actively involved in the workshop and also in Westminster Hall, the oldest part of the Houses of Parliament, having been there for nearly 1000 years and the scene of both the trials of Charles I and Guy Fawkes as well as speeches made by Nelson Mandela and other world leaders.

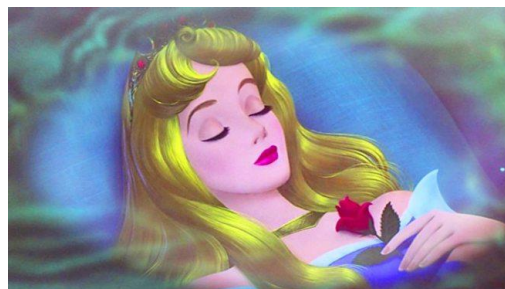
We are hoping to invite in our local MP and a member of the House of Lords in the near future. Watch this space....

Mr Chamberlain

Old Bexley Panto – a message from Old Bexley Primary School's PTA

Panto Season is upon us once again with a fantastic "Old Bexley" interpretation of SLEEPING BEAUTY which will be taking place during the February half term from Tuesday 18 - Saturday 22 February.

Sadly, it appears that this year may well be the last year for the Old Bexley Pantomime team, many of whom no longer have ties to the school, but continue on due to the funds it raises and community spirit it generates. Dwindling ticket sales mean that the time and





Beths Grammar School

Excellence – Community – Respect – Nurture



effort put into rehearsals etc, simply aren't making ends meet - BUT YOU CAN HELP TO SAVE THE PANTO!

Those on the PTA do love a good (or bad) Panto, and are fully aware that 2 hours' worth of bad jokes and mostly off-key singing isn't for everyone, but it would be incredibly sad to lose this treasured Panto group and the joy (and tears!) they bring to the Old Bexley school community and beyond each year.

So, please PLEASE if you aren't jetting away to the slopes, warmer sands, but instead prefer to staycation in the 'Garden of England' this February half term, grab a few friends and the kids and come on down to Old Bexley Primary School's production of Sleeping Beauty for 2020!

Tickets can be bought online by clicking [THIS LINK](https://www.pta-events.co.uk/old-bexley/index.cfm?event=shop#.Xh9aG8j7TIU), or by copying this address into your browser:
<https://www.pta-events.co.uk/old-bexley/index.cfm?event=shop#.Xh9aG8j7TIU>

PARENTS ASSOCIATION

Beths Parents Association kindly invite young and old to take part in their next Quiz Night. So save the date and book your table as soon as possible to spare you disappointment!

Beths Parents Association

QUIZ NIGHT

When?
16th May 2020

Time
7:30pm

Where?
Beths Grammar School
Main Hall

Tickets
Tickets are £5.00 an adult and children (U16) go for £2.50 each. Book now and pay on the evening. Maximum 8 people a team.

If you have a team of 4 and would like to join someone else let us know and we will help you team up with another group.

Remember to bring your friends to form a team to combat against other teachers and parents in a series of fun questions, while also raising money for the school!

Bring some snacks and drinks along, to share with those clever friends and family. The PA team will be selling refreshments, as well as raffle tickets on the night, so bring some cash!

To book a table email:
beths.parents.association@gmail.com

Facebook:
Beths Grammar Parents Association



Beths Grammar School



@Bethsgs



Beths Grammar



Students Arriving on School Site

We would like to continue to remind you that we are struggling to cope with the number of students arriving on site prior to 8.00am in the morning. Below is an extract from a Blog earlier in January, which we would like to remind you about.

Wednesday 22 January – Road and Parking Concerns

As you know, each week in the blog we ask that parents be considerate of our neighbours when dropping or picking up their sons and daughters at the school.

Unfortunately, on Wednesday at 8.15am, our fire alarm went off and as with school procedure, we had to evacuate those in school to our 'muster point'. As is also procedure, students and cars were not allowed to enter the school site until we were advised the site was clear. Due to cars blocking Hartford Road, the Fire Brigade were unable to access the school site. Fortunately, this was a false alarm, however if it hadn't been, the fact that the Fire Brigade were not able to get to the school could have resulted in such dire consequences, as the loss of life.

*The incident on Wednesday, also highlighted that students are arriving on site before 8am, the earliest permitted time of arrival. If there were to be an incident/emergency before the start of the school day, we would have no record of the students on site or their location, and no first aiders to deal with any accident that may occur. Please ensure that your son or daughter arrives at school **no earlier** than 8am.*

We have also been made aware, on several occasions, of cars blocking neighbours drive ways, and on some occasions, being quite abusive to the residents. Please can we remind you that we are constantly trying to work with our neighbours to ensure we have a good relationship; inappropriate and inconsiderate parking only reflects poorly on the school's reputation.

There is also the issue of when students are dismissed at the end of the day, their vision is obstructed by the number of cars parked along Hartford Road and we have, unfortunately had a number of incidents where students have been injured by cars as they have tried to cross the road.

If parents were to refrain from dropping and picking up their sons or daughters by car, it would greatly eliminate the issue experienced by both the school and our neighbours.

Adverse Weather Conditions

As mentioned earlier in the Blog by the Headteacher, this term is the grimest weather-wise and with the possibility of poor weather being predicted over the coming weeks, we thought a reminder to all, as to our procedures, would be helpful.

In the unlikely event that the school is closed due to adverse conditions we will make every effort to make information available to staff, students and parents by 6.30am. However, it may not always be possible to make the decision by this time, so we would ask you all to be understanding about this.





This information will be available on the following websites:

The school's website www.beths.bexley.sch.uk - a 'yellow sticky' will appear on the front page of our site clarifying whether we are open or shut.

The link <http://map.lgfl.org.uk/opencheck/default.aspx?la=303> to Bexley's School OpenCheck website. Parents without internet access can phone 020 8408 7508 and enter the school's Dfe number, 3035403, to get the same information.

SPORTS SECTION

We are delighted to advise that Alan K, Year 7 has been invited to attend an Ice Hockey Tournament in Latvia!

Secondly, Olivia M, Year 13 has been selected to play for England in the U25 Ladies Bowls team which takes place in Scotland.

I am sure you will all join us in wishing them both good luck and a huge congratulations!

Unfortunalety, after making it to the Semi-Final of the 2nd XI Football Cup, our team lost during extra time against Maidstone Grammar for Boys, 2-1. Well done for getting this far!

Results

FOOTBALL				
03.02.2020	Friendly	U12B v Stone Lodge	Away	Draw 0-0
05.02.2020	KSFA Semi Final	2 nd XI v Maidstone Grammar	Home	Lost 2-1 AET
	1 st XI League	1 st XI v WGSB	Home	Lost 5-2
	Friendly	U12A v Stone Lodge	Away	Cancelled
RUGBY				
04.02.2020	Friendly	U12A v WGSB	Home	Won 50-30
		U12B v WGSB	Home	Cancelled
06.02.2020	Friendly	U14 v St Columbas	Away	Won 26-7





BASKETBALL				
05.02.2020	Kent Quarter Final	U12 v Canterbury	Away	Lost 59-44
06.02.2020	Kent BB	U17 v Northfleet	Away	TBC
	Kent Quarter Final	U16 v Ravenswood	Home	Won 52-50
07.02.2020	Friendly	U12 v Sevenoaks Academy	Away	TBC
		U13 v Sevenoaks Academy	Away	TBC
		U14 v Sevenoaks Academy	Away	TBC

Fixtures

FOOTBALL			
12.02.2020	1 st XI League	1 st XI v Gravesend GS	Home
	2 nd XI League	2 nd XI v Newstead Wood	Home
RUGBY			
BASKETBALL			
10.02.2020	Kent Basketball	U17 v HACA	Away
VOLLEYBALL			

Emailing the School

Should you need to email the school with items/concerns of a more 'sensitive' nature, please email headspa@beths.bexley.sch.uk rather than the generic admin email address.

Up and Coming Events

Tuesday 11 February	Year 12 and 13 – Anthony Nolan recruitment event
	19.30 PA Meeting in the Conference Room
Thursday 13 February	16.00-20.00 Year 7 Parents Evening in the Hall
Friday 14 February	Year 12 and 13 Interim Reports issued to parents
	Last day of half term

