



Beths Grammar School

Excellence - Community - Respect - Nurture

Week Ending Friday 31 January

Students Arriving on School Site

Following the message in last week's Blog regarding students turning up on site before 8.00am, we were dismayed to find that the first student to arrive on Monday did so at 6.40am! As explained last week, and again detailed below in red, we do not have the resources in school prior to 8.00am to ensure that students are safe and we would politely ask, again, that they do not arrive before 8.00am.

Wednesday 22 January – Road and Parking Concerns

As you know, each week in the blog we ask that parents be considerate of our neighbours when dropping or picking up their sons and daughters at the school.

Unfortunately, on Wednesday at 8.15am, our fire alarm went off and as with school procedure, we had to evacuate those in school to our 'muster point'. As is also procedure, students and cars were not allowed to enter the school site until we were advised the site was clear. Due to cars blocking Hartford Road, the Fire Brigade were unable to access the school site. Fortunately, this was a false alarm, however if it hadn't been, the fact that the Fire Brigade were not able to get to the school could have resulted in such dire consequences, as the loss of life.

*The incident on Wednesday, also highlighted that students are arriving on site before 8am, the earliest permitted time of arrival. If there were to be an incident/emergency before the start of the school day, we would have no record of the students on site or their location, and no first aiders to deal with any accident that may occur. Please ensure that your son or daughter arrives at school **no earlier** than 8am.*

We have also been made aware, on several occasions, of cars blocking neighbours drive ways, and on some occasions, being quite abusive to the residents. Please can we remind you that we are constantly trying to work with our neighbours to ensure we have a good relationship; inappropriate and inconsiderate parking only reflects poorly on the school's reputation.

There is also the issue of when students are dismissed at the end of the day, their vision is obstructed by the number of cars parked along Hartford Road and we have, unfortunately had a number of incidents where students have been injured by cars as they have tried to cross the road.

If parents were to refrain from dropping and picking up their sons or daughters by car, it would greatly eliminate the issue experienced by both the school and our neighbours.

Wellbeing Award

Thank you to everyone who has been helping to improve our whole school understanding of Mental Health over the last few years and in particular to the excellent work of our Wellbeing Team.



2020–2023



We are delighted to announce that, following our assessment on Tuesday, the school matched all the criteria to be presented the Optimus Wellbeing Award – the only secondary school in the area!

We will continue the excellent work we currently provide to support students and colleagues alike in looking after everyone's mental health.

Capital FM Breakfast show visit Beths Grammar School

We were delighted to welcome Sonny Jay to the school on Monday who was presenting an Award to Mrs Lees, one of our Teachers of English. In her own words, she describes why he came to the school:

I have always been a big fan of a quiz – I like quiz shows, I like pub quizzes, and being a teacher means I often get to set quizzes for my students, so when I heard last Monday morning that Capital Breakfast show host Roman Kemp had devised a “super hard mega quiz” that he thought nobody would be able to complete, I just had to give it a go. I wasn't expecting a call back after I sent my text in to enter, but my phone rang shortly after and I was briefed on how it would run. I had five questions to answer, they would be related to recent current affairs and celebrity news, and I had to give my answer within 10 seconds or I would be out. They said they wanted me to be as confident as possible, so I gave it my all, and even teased the presenter a bit about how I was a teacher and I was here to teach him a lesson. If you would like to have a go at the questions yourself then here they are. Answers at the bottom...no cheating!



Question 1: What was Jennifer Aniston's character name in Friends?

Question 2: Name one of Will Smith's children?

Question 3: Which title are Harry and Meghan currently trying to trademark?

Question 4: How do you spell the first name of the actor who recently played The Joker?

Question 5: What year was the Angel of the North completed?

I was a bit nervous about being live on the radio and under time pressure but when I managed to get all the questions right the other two hosts – Sonny Jay and Vick Hope – were incredibly excited as someone had finally proven to Roman that it was possible to beat the quiz, which he had wholeheartedly refuted up to that point. The last question was the hardest by far, and it is by sheer chance that I remember visiting the Angel of the North the year it was built on my way up to visiting my Grandma in Scotland and was able to work out the correct answer based on that. I definitely wasn't totally sure of myself until they told me I had got that one right though!

As they had not expected anyone to be able to answer all five questions correctly there was no official prize, but they asked if they could come in to school to give me a certificate to say that I had managed





to “join the intellectual elite” as the founding member of quiz winners. Mr Blyghton was happy with the rather amusing idea, and when they visited on Monday I was presented with my “Certificate of Intelligence” by Sonny Jay in front of an enthusiastic audience of Year 7s and 8s. Sonny and his producer Joe recorded a few interview questions with me, asked the audience to participate with some very loud chanting, and even got Mr Blyghton to say a few words. Everyone involved enjoyed the experience and the Capital team were really pleased with how the recording went.

The audio was broadcast on the breakfast show on Tuesday morning from 8.30am, so if you get the chance download the Capital FM app and listen to it – you’ll get to hear your school mentioned live on air! It’s been great fun being involved with this and you can all now officially tell your friends that your school has been declared on national radio as having extremely intelligent teachers, a fact you can most certainly be proud of.

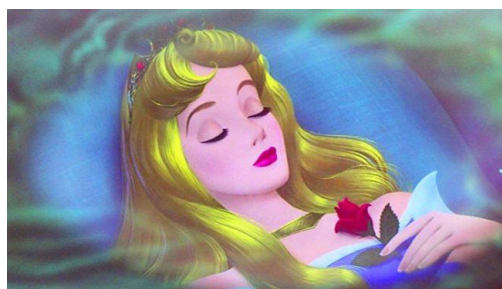
If I could take one thing away from this experience it would be that if you think you might be able to do something challenging but you’re still feeling a bit hesitant then it’s always worth putting yourself out there and giving it a go as you could surprise yourself by how well you actually manage to do, and if it doesn’t work out then you are guaranteed to learn something new in the process. If you could take one thing away from reading this article, it should be that I am a genius!

Quiz answers:

1. Rachel
2. Willow, Jaden or Trey
3. Sussex Royal
4. Joaquin
5. 1998

Old Bexley Panto – a message from Old Bexley Primary School’s PTA

Panto Season is upon us once again with a fantastic “Old Bexley” interpretation of SLEEPING BEAUTY which will be taking place during the February half term from Tuesday 18 - Saturday 22 February.



Sadly, it appears that this year may well be the last year for the Old Bexley Pantomime team, many of whom no longer have ties to the school, but continue on due to the funds it raises and community spirit it generates. Dwindling ticket sales mean that the time and effort put into rehearsals etc, simply aren’t making ends meet - BUT YOU CAN HELP TO SAVE THE PANTO!

Those on the PTA do love a good (or bad) Panto, and are fully aware that 2 hours’ worth of bad jokes and mostly off-key singing isn’t for everyone, but it would be incredibly sad to lose this treasured Panto group and the joy (and tears!) they bring to the Old Bexley school community and beyond each year.





Beths Grammar School

Excellence – Community – Respect – Nurture



So, please PLEASE if you aren't jetting away to the slopes, warmer sands, but instead prefer to stay-cation in the 'Garden of England' this February half term, grab a few friends and the kids and come on down to Old Bexley Primary School's production of Sleeping Beauty for 2020!

Tickets can be bought online by clicking [THIS LINK](#), or by copying this address into your browser:
<https://www.pta-events.co.uk/old-bexley/index.cfm?event=shop#.Xh9aG8j7TIU>

PARENTS ASSOCIATION

Beths Parents Association kindly invite young and old to take part in their next Quiz Night. So save the date and book your table as soon as possible to spare you disappointment!

Beths Parents Association

QUIZ NIGHT

When?
16th May 2020

Time
7:30pm

Where?
Beths Grammar School
Main Hall

Tickets
Tickets are £5.00 an adult and children (U16) go for £2.50 each. Book now and pay on the evening. Maximum 8 people a team.

If you have a team of 4 and would like to join someone else let us know and we will help you team up with another group.

Remember to bring your friends to form a team to combat against other teachers and parents in a series of fun questions, while also raising money for the school!

Bring some snacks and drinks along, to share with those clever friends and family. The PA team will be selling refreshments, as well as raffle tickets on the night, so bring some cash!

To book a table email:
beths.parents.association@gmail.com

Facebook:
Beths Grammar Parents Association



Beths Grammar School



@Bethsgs



Beths Grammar



SPORTS SECTION

Results

FOOTBALL				
27.01.2020	KS5 Knockout	U15 v Welling	Away	Lost 3-5
29.01.2020	2 nd XI League	2 nd XI v Hayes	Away	Won 2-0
	N Kent Quarter Final	U12 v Hurstmere	Away	Lost 7-1
RUGBY				
24.01.2020	Friendly	1 st XV v CSGS	@ Well Hall	Won 8-7
28.01.2020	Friendly	U14 v WGSB	Home	Won 29-21
BASKETBALL				
23.01.2020	Kent Basketball	U16 v Bexley GS	Home	Won 46-22
28.01.2020	Kent BB	U15 v Hayes	Away	Lost 81-91
30.01.2020	Kent BB	U17 v Canterbury	Home	Lost 38-71

Fixtures

FOOTBALL			
03.02.2020	Friendly	U12B v Stone Lodge	Away
05.02.2020	2 nd XI League	2 nd XI v Maidstone Grammar	Home
	1 st XI League	1 st XI v WGSB	Home
	Friendly	U12A v Stone Lodge	Home
RUGBY			
04.02.2020	Friendly	U12A v WGSB	Home
		U12B v WGSB	Home
06.02.2020	Friendly	U14 v St Columbas	Away





BASKETBALL			
06.02.2020	Kent BB	U17 v Northfleet	Away
07.02.2020	Friendly	U12 v Sevenoaks Academy	Away
		U13 v Sevenoaks Academy	Away
		U14 v Sevenoaks Academy	Away
VOLLEYBALL			

Adverse Weather Conditions

As mentioned earlier in the Blog by the Headteacher, this term is the grimest weather-wise and with the possibility of poor weather being predicted over the coming weeks, we thought a reminder to all, as to our procedures, would be helpful.

In the unlikely event that the school is closed due to adverse conditions we will make every effort to make information available to staff, students and parents by 6.30am. However, it may not always be possible to make the decision by this time, so we would ask you all to be understanding about this.

This information will be available on the following websites:

The school's website www.beths.bexley.sch.uk - a 'yellow sticky' will appear on the front page of our site clarifying whether we are open or shut.

The link <http://map.lgfl.org.uk/opencheck/default.aspx?la=303> to Bexley's School OpenCheck website. Parents without internet access can phone 020 8408 7508 and enter the school's Dfe number, 3035403, to get the same information.

Emailing the School

Should you need to email the school with items/concerns of a more 'sensitive' nature, please email headspa@beths.bexley.sch.uk rather than the generic admin email address.

Up and Coming Events

Monday 3 February	Year 9 Globe Workshop
Tuesday 4 February	Year 12 Student Council
Wednesday 5 February	KS3 Chinese New Year Assembly
Thursday 6 February	Year 10 Chinese New Year Assembly
	UK Intermediate Maths Challenge
	Year 13 My Bnk training
Friday 7 February	Year 12 and 13 Anthony Nolan talk
	Year 7 Interim Reports issued to parents

