



Beths Blog

Week ending Friday 25 January 2019

Robert Burns Night – Today

For all our Scottish families and friends of the school celebrating tonight, below is one of Robert Burns' shorter poems to get you all in the mood.

The Banks o' Doon

*Ye banks and braes o' bonie Doon,
How can ye bloom sae fresh and fair?
How can ye chant, ye little birds,
And I sae weary fu' o' care!
Thou'll break my heart, thou warbling bird,
That wantons thro' the flowering thorn:
Thou minds me o' departed joys,
Departed never to return.*

*Aft hae I rov'd by Bonie Doon,
To see the rose and woodbine twine:
And ilka bird sang o' its Luvie,
And fondly sae did I o' mine;
Wi' lightsome heart I pu'd a rose,
Fu' sweet upon its thorny tree!
And may fause Luver staw my rose,
But ah! he left the thorn wi' me.*

Year 11 students selected for England U16 Team

We are very pleased to announce that two of our students were picked to join the England U16 team! The team managed to beat Albania 2-0 and Moldova 5-1 but, unfortunately lost against Turkey 2-1 but went on to beat Russia in the play offs to come third overall!

What a fantastic achievement for both our students and the squad!

Congratulations Kelechi and Euan.



Since the tournament, Kelechi has kindly donated his English shirt to the school which we are currently having framed. The school will proudly be displaying this in our Reception area shortly.

Year 8 House Football

The Year 8 House football matches started this week. The qualifying stages were held on Monday, Wednesday and Thursday and the results were as below:

Abbey 2 v 0 Hurst
Brampton 0 v 0 Abbey
Brampton 3 v 1 Hurst

Cray 2 v 1 Eardley
Cray 0 v 0 Wickham
Eardley 1 v 0 Wickham

Today, the plays-offs take place where Hurst and Wickham play for 5th and 6th place and Abbey and Eardley for the 3rd and 4th places.

Don't forget to follow/like us on our social media accounts

Facebook: Beths Grammar School

Twitter: @Bethsgs

Instagram: Beths Grammar

On Monday, the final itself will take place with Brampton and Cray both desperate for the win.

Adverse Weather Conditions

With the possibility of poor weather being predicted over the coming weeks, we thought a reminder to all, as to per procedures, would be helpful.

In the unlikely event that the school is closed due to adverse conditions we will make every effort to make information available to staff, students and parents by 6.30am. However, it may not always be possible to make the decision by this time, so we would ask you all to be understanding about this.

This information will be available on the following websites:

The school's website www.beths.bexley.sch.uk

The link <http://map.lgfl.org.uk/opencheck/default.aspx?la=303> to Bexley's School OpenCheck website. Parents without internet access can phone 020 8408 7508 and enter the school's Dfe number, 3035403, to get the same information.

'The Curious Incident of the Dog in the Night-Time'

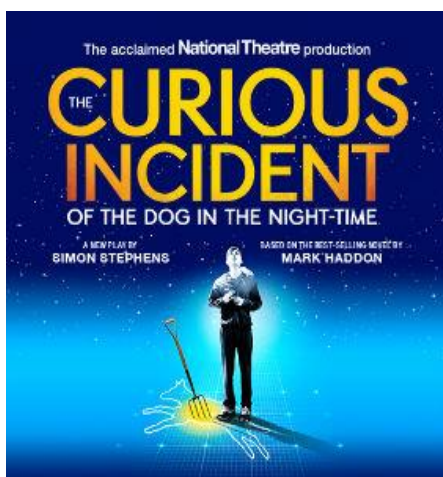


Photo: londontheatre.co.uk

'On Tuesday Year 12 and Year 10 students taking A Level and GCSE Drama took a trip to see The Curious Incident of the Dog in the Night Time at the Piccadilly Theatre in London. The students had fantastic seats sitting in the stalls with clear views of the dynamic staging. By the interval the students were talking about everything they had seen in the first half with real excitement and enjoyment. At the end of the play the students gave the actors a standing ovation and listened with admiration as Christopher Boone solved his Maths question to finish off the whole performance. The students have come away from the theatre full of new ideas to inspire their performance work.' Ms Grady

'We were taken on a trip to see The Curious Incident of the Dog in the Night Time on Tuesday evening. It was very fun to watch and I'm glad Ms Grady took us to watch the play. There were various scenes in the performance that I personally enjoyed. For example, I loved the big lifts and the wall running as well as the use of the lighting to make the scene transitions more slick. It has a really intriguing effect on me and throughout the play I was interested to see what happened next. It is one of my favourite plays and I hope to see it again in the future.' B Richards 10W

'The Curious trip was really good as it was the first play I have ever seen at the theatre. I found it enjoyable because I was able to understand the story clearly due to the actors creating engaging characters and the dynamic use of lifts and movement has inspired me with my Drama GCSE. It was also fun to recognise some of the movement and lifts we had done in lesson too.' L Leech 10E

Don't forget to follow/like us on our social media accounts

Facebook: Beths Grammar School

Twitter: @BethsGS

Instagram: Beths Grammar

Request for Work Experience Placement Opportunities for Year 10 Students

We would like to kindly ask that if any parents or readers of our school Blog have connections with companies who would be able to offer a work experience placement to a boy in Year 10 at Beths, we would be delighted to hear from you. We understand that some boys struggle finding placements in industries they are interested in and the time is drawing closer to the deadline for securing a placement.

It is our aim that every boy has access to high quality work experience placements that will help build their aspirations for the future. **Any help you can give here would be greatly appreciated.** We want this to be a great experience for every student.

If you are able to offer a Year 10 Beths student a work experience placement then please can you contact either **Mrs Game or Mr McBeth**, with your contact details along with the name of the company and type of industry. When a student cannot find a placement we may be able to help him out through your good will and support.

Thank you in advance.

Volunteer at your local library

Have you ever considered giving one of our local libraries a helping hand. Volunteers can tell stories, play games or share their knowledge about computers. There are lots of fun opportunities that will help your local community and provide you with great experience for your future. If you are interested in helping out, please visit the following website for more information: <https://arena.yourlondonlibrary.net/web/bexley/volunteering>



Social Media

Don't forget that we are on various social media platforms and would love you to get involved! We try and post about events 'as they happen' in school along with up and coming trips, visits, events etc. We then use this Blog to tell you about what we've been doing in more detail and try to post a different selection of photos to accompany the articles.

So social media is where you'll see everything first so, why not join us on our social media pages? We'd love to receive your input too!



Beths Grammar School



bethsgrammar



BethsGS

Come and join the Parents Association

We've had a busy start and already we have a couple of dates to keep free in your diary.

We have dates for the next Beths PA Quiz Night is 30th March 2019. This is always such a fun night. Teams of eight, Adults and older children (11+) all welcome. It is £5.00 per ticket for adults and £2.50 for the older children. Keep an eye out for the flyer that will be e-mailed to you by the school. Another date to keep free in your diaries is Saturday 8th June 2019 as we are lucky enough to be able to invite Out of Bounds Comedy in to run a Comedy Night. This is a hugely popular event a Beths

Don't forget to follow/like us on our social media accounts

Facebook: Beths Grammar School

Twitter: @BethsGS

Instagram: Beths Grammar

and has proved extremely popular in the past. An evening of stand-up comedy with talented comedians, socialising with other Beths parents with a licensed bar – fundraising for your school doesn't get better than this! Come along for a chat, a laugh; bring yourselves and bring some friends...The bigger the crowd the bigger the laughs!

Sport

FIXTURES

FOOTBALL			
Kent Semi Final	01.02.2019	U14 v St Pauls	Home
League	30.01.2019	2XI v Borden GS	Away
RUGBY			
Friendly	02.02.2019	U12A, U12B & U13 v Gravesend	Home
	02.02.2019	U14 & U15 v Gravesend	Away
BASKETBALL			
Kent	28.01.2019	Year 10 v Northfleet	Home
	29.01.2019	Year 11 v King Henry	Away
	30.01.2019	Year 8 v Hayes	Away
	31.01.2019	Year 8 v Hayes	Home
London Youth Games	29.01.2019	Year 9 v Prendergast Vale	Home

RESULTS

FOOTBALL					
N Kent	25.01.19	U16 v Hurstmere	Away	Result week	next
	18.01.2019	U14 v St Columbas	Away	Won 4-0	
League	23.01.19	1 st XI v WGSB	Home	Won 2-1	
ESFA Elite Quarter Final	22.01.19	U14 v Langley (Norwich)	Away	Lost 8-2	
RUGBY					
Friendly	23.01.19	1XV v Oakwood Park	Away	Drew 19-19	
	26.01.19	U12A, U12B & U14 v Maidstone	Home	Result week	next
	26.01.2019	U13 and U15 v Maidstone	Away	Result week	next
	19.01.2019	U12 A V Rochester Math	Away	Cancelled	

Don't forget to follow/like us on our social media accounts

Facebook: Beths Grammar School

Twitter: @Bethsgs

Instagram: Beths Grammar

	19.01.2019	U13 & U14 v Rochester Math	Home	Cancelled
BASKETBALL				
National	21.01.19	Year 9 v NTC	Away	Won 79-63
	21.01.19	U16 v North School	Away	Won 94-63
	23.01.19	U19 vs Haberdashers Bromley	Away	Lost 36-88
Kent	24.01.19	Year 10 v Hayes	Away	Won 80-41
	24.01.19	Year 8 v NTC	Home	Won

Coming up

Safe Drive, Stay Alive

Year 12 students will be attending 'Safe Drive, Stay Alive' during the morning of Wednesday 30 January. This is an innovative theatre education project, exploring the circumstances and consequences of a road traffic collision.

Chinese New Year Themed Afternoon Tea

Following on from our successful Christmas Afternoon Tea in December, our MFL department have decided to treat retired and semi-retired members of the community once again, with a Chinese New Year themed Afternoon Tea!



This is set to be another great afternoon and will be held on Monday 4 February 2019, between 2.00pm-3.15pm at a cost of only £2.00 per person.

If you would like to reserve yourself a seat, please contact us on 01322 556538 or email admin@beths.bexley.sch.uk

Students on Site

A reminder that there are still an increasing number of students arriving particularly early in the morning and staying late into the evening. The school actually opens for students at 8.00am in the morning and we would encourage all students (unless they are remaining for pre-arranged activities) to have left the site by 5.00pm.

The school is unable to ensure there is a qualified first aider on site before 8.00am in the morning and after 4.30pm in the evening. This request is being made as we are unable to supervise students outside of these times and we can therefore take no responsibility for them, should they be involved in any form of accident.

Safety and Courtesy

On a more serious note, we would like to remind parents, students and staff to continue to be respectful of our neighbours and not park across their driveways. The safety of our students continues to be our utmost priority and so we also ask that, if you are dropping off or collecting your

Don't forget to follow/like us on our social media accounts

Facebook: *Beths Grammar School*

Twitter: *@Bethsgs*

Instagram: *Beths Grammar*

son or daughter, you abide by the road markings and refrain from parking on zig-zags or double yellow lines.

We have also received a couple of calls from members of the public about parents dropping students in the morning actually on the roundabout at the top of Bourne Road – close to Dartfordians. This is obviously extremely dangerous not just for other road users, but also for the students themselves. We would urge that parents please find a safe place to drop-off their child/children for school.

Don't forget to follow/like us on our social media accounts

Facebook: Beths Grammar School

Twitter: @Bethsgs

Instagram: Beths Grammar